

Salara Series

You've never seen a screen like this before.

In your home or office, the SALARA SERIES makes a design statement. The SALARA's small, elliptical case and domed endcaps are finished in solid white, no need to hide it with extra carpentry work.

Quick and easy installation! Mounts to the wall with "floating" brackets which can be positioned along the back of the case. The result—the most attractive high-quality, lower-cost motorized screen you've ever seen.

Salara—Motorized screen in your choice of a conventional viewing surface: fiberglass matt white, glass beaded and HIGH CONTRAST GREY, AT1200* and AT GREY*. (*Acoustically transparent fabrics are not recommended for screens smaller than 80" wide when used with LCD or DLP projectors.)

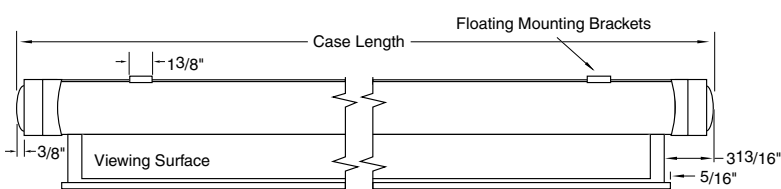
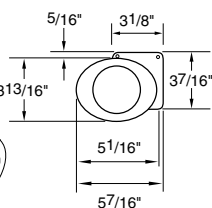
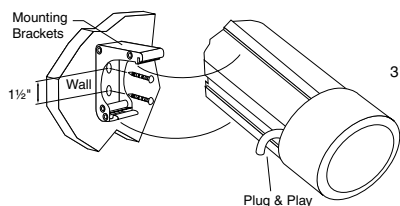
Salara/Plug & Play™—Motorized screen with same viewing surface choices as the SALARA (above). The difference: with the SALARA/PLUG & PLAY, you can have a remote controlled screen on your wall in 10 minutes—no electrician required. Its 10' IEC cord plugs into a socket in the back of the case and the other end into the nearest wall outlet. SALARA/PLUG & PLAY has a built-in controller and IR receiver, and comes with a hand-held IR transmitter. RS232 compatible.

Salara/Series M—Manual, spring-roller operated screen with your choice of a conventional viewing surface: fiberglass matt white, glass beaded or HIGH CONTRAST GREY.

System Options

- **Extra drop**—Up to 8' overall height, either surface color or black. (Surface color standard for AV format, black for other formats.)
- **Black masking borders**—Borders are optional for AV format screens and standard for all other format screens.
- **Control options**—SALARA is a hardwired screen like other DRAPER motorized screen. Can be furnished with any standard control option. Refer to page 6. Also available with built-in IR receiver. Includes a hand-held infrared remote control. IR receiver is built into the endcap and includes additional interface for dry contact closure and RS232.

Case Dimensions/Method of Installation



Small, elliptical case and domed endcaps finished in solid white



Built-in controller and IR receiver

Dimensions & Data—Salara

Nominal Diagonal	Image Area (H x W)	Overall Size (H x W)	Case Length	Net Wt. (lbs.)
AV Format				
	50" x 50"		57 ¹ / ₈ "	23
	60" x 60"		67 ¹ / ₈ "	26
	70" x 70"		77 ¹ / ₈ "	30
	84" x 84"		91 ¹ / ₈ "	35
	72" x 96"		103 ⁵ / ₈ "	38
	96" x 96"		103 ⁵ / ₈ "	41
NTSC Video Format (4:3)				
6'	42 ¹ / ₂ " x 56 ¹ / ₂ "	46 ¹ / ₂ " x 59 ¹ / ₂ "	67 ¹ / ₈ "	25
7'	50" x 66 ¹ / ₂ "	53 ¹ / ₂ " x 69 ¹ / ₂ "	77 ¹ / ₈ "	29
100"	60" x 80"	64" x 83 ¹ / ₂ "	91 ¹ / ₈ "	34
10'	69" x 92"	73" x 96"	103 ⁵ / ₈ "	38
HDTV Format (16:9)				
65"	31 ³ / ₄ " x 56 ¹ / ₂ "	43 ³ / ₄ " x 59 ¹ / ₂ "	67 ¹ / ₈ "	24
73"	36" x 64"	48" x 69 ¹ / ₂ "	77 ¹ / ₈ "	28
82"	40 ¹ / ₂ " x 72"	52 ¹ / ₂ " x 74"	81 ³ / ₈ "	30
92"	45" x 80"	57" x 83 ¹ / ₂ "	91 ¹ / ₈ "	32
106"	52" x 92"	64" x 96"	103 ⁵ / ₈ "	37

¹For SALARA/SERIES M net weights, subtract 5 lbs.



Hand-held IR transmitter